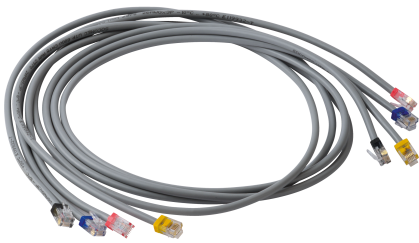


48290596

RJ12 connection cable 0.5m x4



General characteristics

- Plug & Play.
- Colour coded.
- Multiple lengths.

[Access to resources \(ex: manuals\)](#)

The RJ12 connections allow you to connect modules very quickly and to automatically configure connected current sensors:

- communication address,
 - load type,
 - sensor type and ratio,
 - automatic rating and verification of current travel direction.
- Wiring errors are also prevented and installation is simplified.

Technical Characteristics

| | |
|---------------------------------|---|
| Length of the product unit [mm] | 500 |
| Color | Red, Black, Yellow, Blue |
| Connector | RJ12 |
| Length | 0.5 m |
| Type | Connection cable for TE, TR/iTR, TF current sensors |

Classification

| | |
|------------|----------|
| UNSPSC | 83101808 |
| ETIM Class | EC001262 |
| IGCC | 6042 |

Commerce

| | |
|-----------------------|------------|
| Effective date | 2014-01-10 |
| Offer Life Cycle Code | 40 |
| Country of origin | TH |

ETIM - Mechanical characteristics

| | |
|---------------------|-------|
| Length [m] | 0.5 |
| Colour outer sheath | Grey |
| Anti-kink sleeve | None |
| Cable construction | Other |
| AWG-size | 26 |
| Cable type | U/UTP |

ETIM - Technical features

| | |
|---|-----------|
| Category | 5 |
| Type of connector connection 1 | RJ12 6(6) |
| Type of connector connection 2 | RJ12 6(6) |
| Locking lever | No |
| Fire retardant version | No |
| Oil resistant according to EN IEC 60811-404 | Yes |
| Pin assignment | 1:1 |
| NVP value [%] | 70 |

Logistics

| | |
|---------------------------------|---------------|
| GTIN/EAN | 3596032782023 |
| Customs number | 8544429090 |
| Price unit | PC |
| Weight of the packing unit [kg] | 0.07 |
| Length of the packing unit [m] | 0.003 |
| Width of the packing unit [m] | 0.01 |
| Depth of the packing unit [m] | 0.019 |

Norms

| | |
|-------------------------|------------|
| Conformity to standards | IEC UL |
|-------------------------|------------|