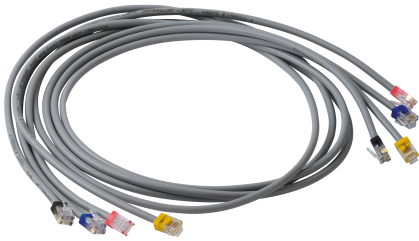


48290597

RJ12 connection cable 0.5m x6



General characteristics

- Plug & Play.
- Colour coded.
- Multiple lengths.

Access to resources (ex: manuals)

The RJ12 connections allow you to connect modules very quickly and to automatically configure connected current sensors:

- communication address,
 - load type,
 - sensor type and ratio,
 - automatic rating and verification of current travel direction.
- Wiring errors are also prevented and installation is simplified.

Technical Characteristics

Length of the product unit [mm]	500
Color	Red, Black, Yellow, Blue, Green, Purple
Connector	RJ12
Length	0.5 m
Type	Connection cable for TE, TR/iTR, TF current sensors

Classification

UNSPSC	83101808
ETIM Class	EC001262
IGCC	6042

Commerce

Effective date	2013-11-22
Offer Life Cycle Code	40
Country of origin	TH

ETIM - Mechanical characteristics

Length [m]	0.5
Colour outer sheath	Grey
Anti-kink sleeve	None
Cable construction	Other
AWG-size	26
Cable type	U/UTP

ETIM - Technical features

Category	5
Type of connector connection 1	RJ12 6(6)
Type of connector connection 2	RJ12 6(6)
Locking lever	No
Fire retardant version	No
Oil resistant according to EN IEC 60811-404	Yes
Pin assignment	1:1
NVP value [%]	70

Logistics

GTIN/EAN	3596032776718
Customs number	8544429090
Price unit	PC
Weight of the packing unit [kg]	0.09
Length of the packing unit [m]	0.003
Width of the packing unit [m]	0.01
Depth of the packing unit [m]	0.02

Norms

Conformity to standards	IEC UL
-------------------------	------------