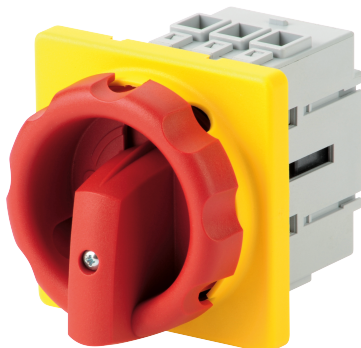


**21113205**

## Manual Load break switch COMO 3P 50A 400-690 VAC door front mounting



### Strong points

- Easy mounting
- Compact
- Safety

### General characteristics

- 2 stable positions (I, 0).
- Double break per phase.
- Positive contact indication.
- Contact point technology.
- Padlocking in 0 position.
- IP20 devices and accessories.

### Compliance with standards

- IEC 60947-3
- UL 60947-4-1

### Link to the reference



<https://emea.socomec.com/en/reference/21113205>

COMO are compact and modular load break switches. They make and break under all types of load conditions and provide safe isolation for any low voltage circuit, especially for machine control circuits.

### Classification

UNSPSC	39122233
ETIM Class	EC000216
IGCC	5290

### Commerce

Description	Manually operated Load break switch COMO with 3 poles, 50A, 400-690 VAC door frontal mounting direct operation with handle type K1. Delivered without handle
Effective date	2016-02-29
Offer Life Cycle Code	40
Country of origin	DE

### Environmental Sustainability

Climate change - Total - Cradle to Grave [kg CO <sub>2</sub> eq.]	59
Climate change - Total - Cradle to Gate [kg CO <sub>2</sub> eq.]	1
REACH	False
RoHS	True

### ETIM - Electrical characteristics

Max. rated operation voltage Ue AC [V]	690
Rated operating voltage [V]	400..690
Rated permanent current Iu [A]	63
Rated permanent current at AC-23, 400 V [A]	41
Rated permanent current at AC-21, 400 V [A]	63
Rated operation power at AC-3, 400 V [kW]	63
Rated short-time withstand current Icw [kA]	1
Rated operation power at AC-23, 400 V [kW]	22
Switching power at 400 V [kW]	22
Conditioned rated short-circuit current Iq [kA]	8
Number of poles	3

### ETIM - Mechanical characteristics

Suitable for floor mounting	No
Suitable for front mounting 4-hole	No
Suitable for front mounting centre	Yes
Suitable for distribution board installation	No
Suitable for intermediate mounting	Yes
Colour control element	Other
Degree of protection (IP), front side	IP20
Width [mm]	67

Height [mm]	67
Depth [mm]	88
<b>ETIM - Technical features</b>	
Version as main switch	No
Version as maintenance-/service switch	Yes
Version as safety switch	Yes
Version as emergency stop installation	Yes
Version as reversing switch	No
Number of switches	1
Motor drive optional	No
Motor drive integrated	No
Voltage release optional	No
Device construction	Built-in device fixed built-in technique
Type of control element	Other
Interlockable	Yes
Type of electrical connection of main circuit	Screw connection
<b>Logistics</b>	
GTIN/EAN	3596032965570
Customs number	8536508000
Price unit	PC
Weight of the packing unit [kg]	0.16
Length of the packing unit [m]	0.06
Width of the packing unit [m]	0.06
Depth of the packing unit [m]	0.078
<b>Norms</b>	
Conformity to standards	IEC
<b>Technical Characteristics</b>	
Height [mm]	67
Width [mm]	67
Depth [mm]	88
Weight [kg]	0.16
Control operator	K1-Direct, door mounting
Number of poles	3
Rated voltage	400..690 VAC
Rated current [A]	50 (UL) 63 (IEC)
Type	Door mounting
Frame size	COMO