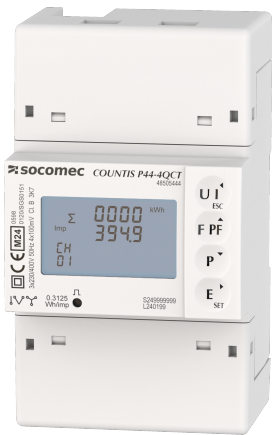


48505244

Three-phase MID energy meter, connected to 2 QCT-C-xx via RJ12, Modbus protocol



Access to resources (ex: manuals)

Technical Characteristics	
Application	Metering
Communication protocols	MODBUS
Model	P44-2QCT
Type	2 QCT, MID
Classification	
UNSPSC	41113708
ETIM Class	EC001506
Commerce	
Description	COUNTIS P44-2QCT are three-phase meters that can be connected to 2 QCT-C-xx, which are three-phase current transformers that measure the load currents of an electrical system and send the data to meters via an RJ12 output.
Effective date	2099-01-01
Offer Life Cycle Code	10
Country of origin	CN
Environmental Sustainability	
PEP Filename	SOCO-00116-V01.01-EN.pdf
Climate change - Total - Cradle to Grave [kg CO <sub>2</sub> eq.]	24
Climate change - Total - Cradle to Gate [kg CO <sub>2</sub> eq.]	12
ETIM - Electrical characteristics	
Nominal voltage (Un) N-L [V]	184..276
Nominal voltage (Un) L-L [V]	320..480
Frequency [Hz]	45..55
Power consumption [W]	1
Accuracy class	C
Pole type	Three conductor/four conductor
Energy type	Effective power and blind power

Suitable for	Purchase/supply
Tariff type	Multi-tariff
Tariff control	External
Measurement type load profile	No
Calibrated	Yes
Pulse output	Optical
Pulse type	D0
Pulse rate [Imp/kWh (kvarh)]	10..10
<b>ETIM - Mechanical characteristics</b>	
Escapement mechanism	No
Mounting method	DRA (DIN-rail adapter)
Width in number of modular spacings	4
Width [mm]	71,7
Depth [mm]	66
Height [mm]	122,5
With lock code	No
Degree of protection (IP)	IP20
<b>ETIM - Technical features</b>	
Type of meter	Electronic
Model	Measurement transformer
Approval	Measuring Instruments Directive
Type of indication	Digital
Type of interface	Modbus
EEC40 signature	No
<b>Logistics</b>	
GTIN/EAN	3596033319488
Customs number	9028301900