



## TYTAN® I

### D01 – Fuse switch disconnecter incl. fuse plug with flashing indicator

- ✓ LS – switch compatible
- ✓ Width of 18 mm per pole
- ✓ Optical fuse monitoring via flashing indicator
- ✓ All-pole switching
- ✓ Easy fuse replacement thanks to fuse plug with finger protection
- ✓ Adjustable coding of the current in the switching device
- ✓ Automatic adjustment of the fuse by coding spring
- ✓ Sealable
- ✓ Feed-in on both sides
- ✓ No fitting sleeves required
- ✓ The foot contact is protected against contact when the fuse plug is removed



DIN rail  
devices  
H 35mm

## Versions

Item	kg/pc	unit	Item no.
1 pole	0,09	12	<b>10 1651</b>
2 pole	0,18	6	<b>10 1652</b>
3 pole	0,27	4	<b>10 1653</b>
1 pole + N pre-/ post lagging phase)	0,17	6	<b>10 1641</b>
3 pole + N pre-/ post lagging phase)	0,35	3	<b>10 1643</b>

## Standards

IEC/EN 60947-1, IEC/EN 60947-3  
IEC/EN 60269-1  
IEC/EN 60269-3-1  
DIN VDE 0636, DIN 49522

**To be operated by ordinary persons acc. to IEC/EN 61439-3, VDE 0660-600-3**

## Electrical data according to IEC/EN

Rated operational voltage:  $U_e$

Rated operational current:  $I_e$

Rated uninterrupted current:  $I_u$

Rated conditional short-circuit current:  $I_{cm}$

Rated short-circuit making capacity:  $U_{imp}$

Rated insulation voltage:  $U_i$

Overvoltage category:

Comparative tracking index:

Utilization category:

Power loss per current path without fuse-link at  $I_e$ : L1, L2, L3  
N

Max. permissible power loss of fuse-links  $P_n$ :

Pollution standard:

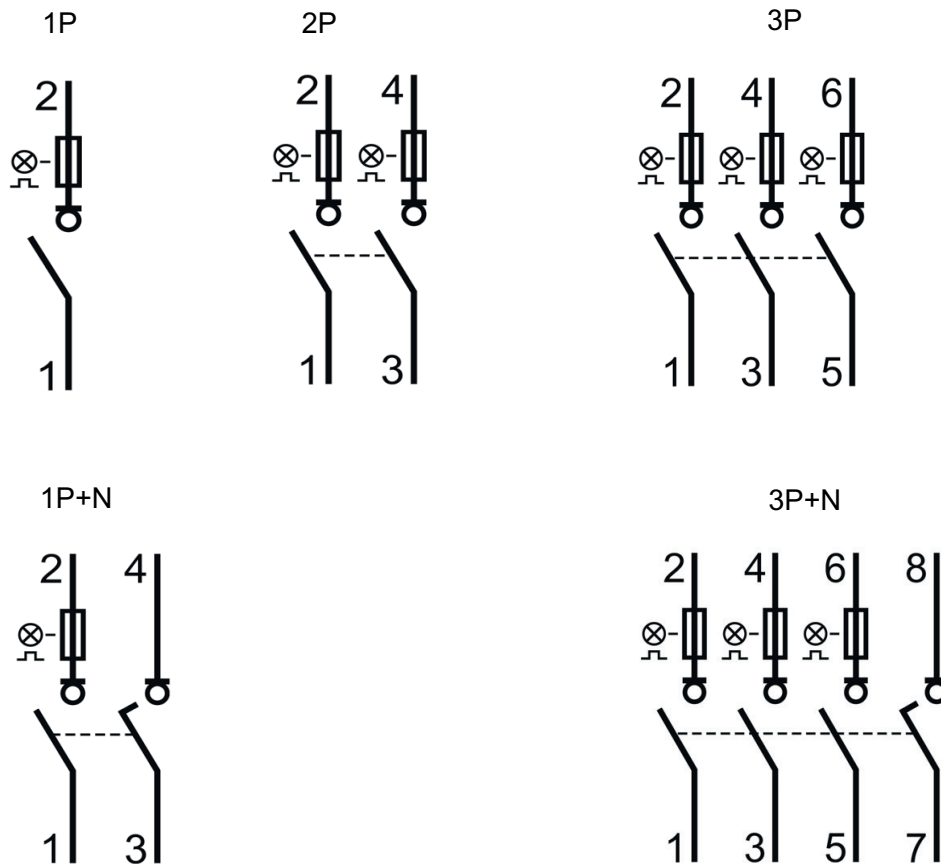
AC 400V  
DC 1 pole 110V,  
DC 2 pole 220V  
16 A  
16 A  
50 kA<sub>r.m.s</sub>  
4 kV  
400 V  
III  
CTI 600  
AC 22B  
2 W  
1 W  
2,5 W  
3 (DIN VDE 0110)

## Flashing indikation

Rated operational voltage range:

48-400 VAC

## Circuit diagram

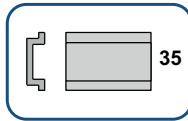


## Mechanical Data

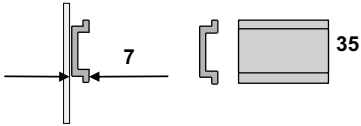
Terminal:	Lift terminal	Galvanized steel
Screw:	Pozidriv	PZ2
Cross section:		AWG 4-16
Tightening torque:		2,5-3 Nm
Degree of rotation (behind front plate with inserted fuse-plugs)		IP 20 C
Touch protection:		ÖVE-EN 6 / finger and hand touch safe
Temperature range: IEC 61439-1	Ambient air	-25 ... +40°C
	24h Average	≤ +35°C
	Storage	-25 ... +60°C
Grenzübertemperaturen: IEC 61439-1	Terminals bottom	≤ +70°K
	Terminals top	≤ +65°K
	Manual operating means	≤ +25°K
	Parts intended to be touched but not hand-held	≤ +40°K
	Parts need not to be touched during normal operation	≤ +50°K
Flame class:		UL 94 / V0
Glow-wire test:		960°C (Parts of insulating material necessary to retain current-carrying parts in position)
Climatic resistance: IEC 60068-2-78	Moist heat	constant
IEC 60068-2-30		cyclical
Plastic:		Halogen-, silicone-, and phosphorfree

## Mechanical Data

Mounting:

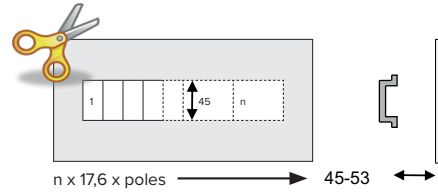


For Hat rail according to IEC/EN 60715



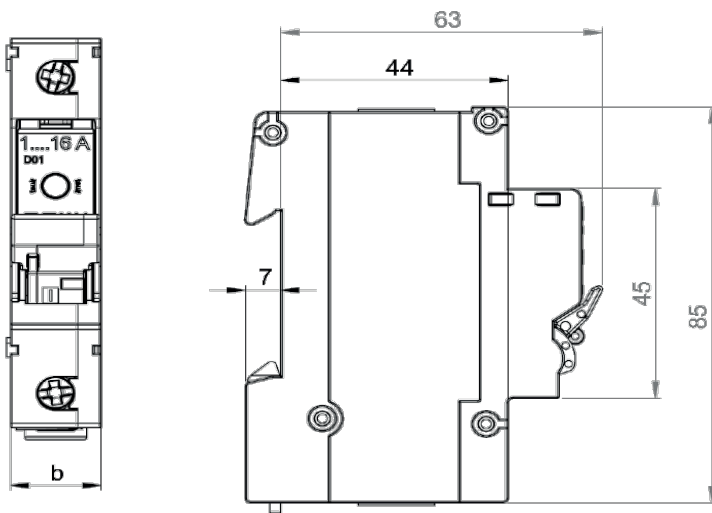
Tool less onto Hat rail 35mm

Cut-out for front plate



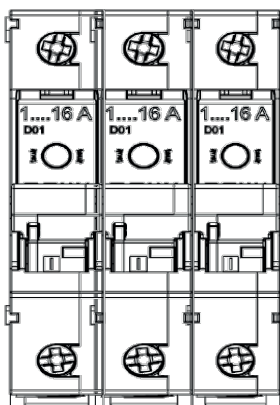
## Dimensions WxHxD

Typ	W (b)	H	D	[ ]
1P	17,6	85	70	mm
2P	35,2	85	70	mm
3P	52,8	85	70	mm
1P + N	35,2	85	70	mm
3P + N	70,4	85	70	mm



## Mounting position\*\*

\*\* Pay attention to rated diversity factor according to IEC/EN 61439-1!

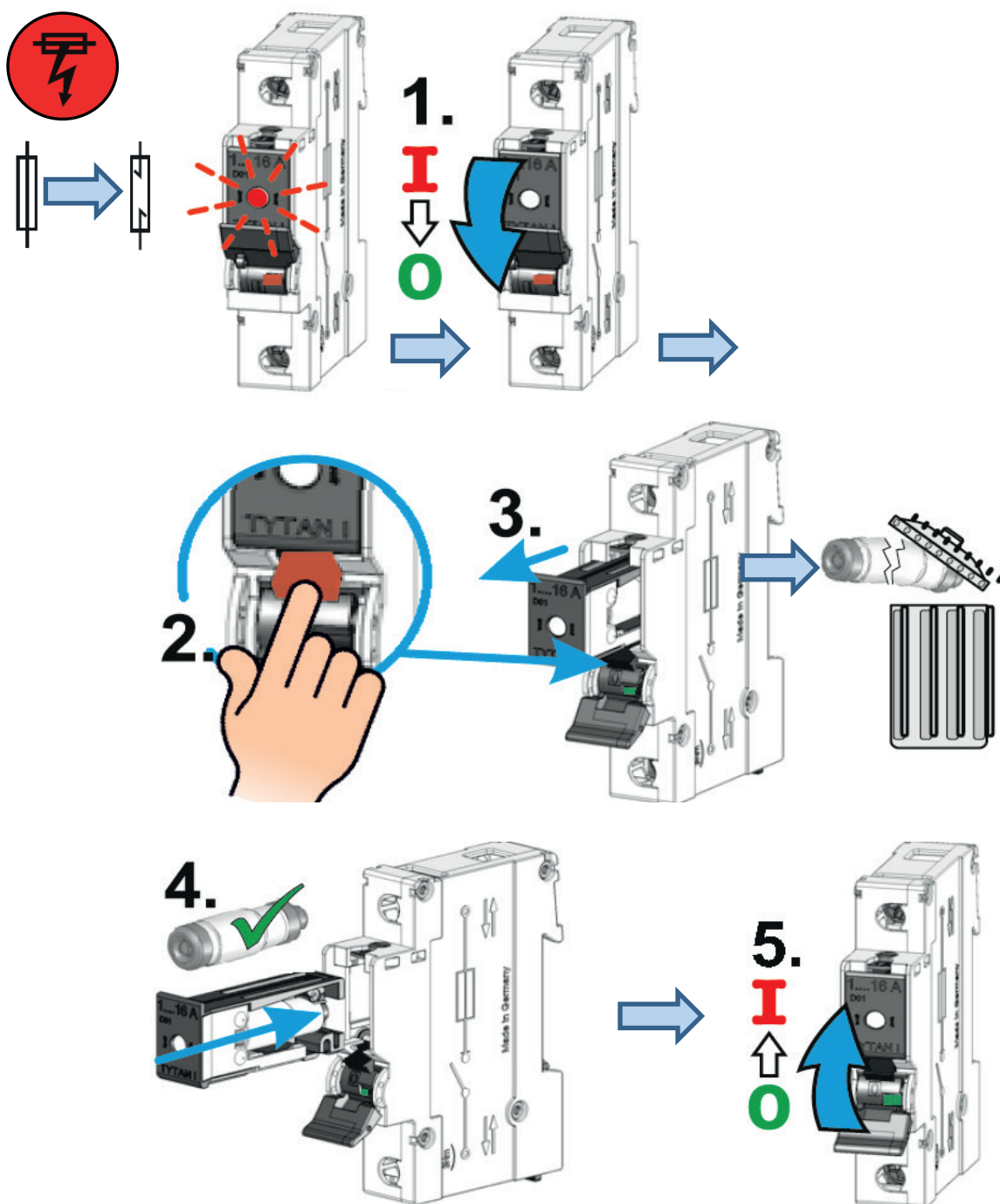


## Visualisation

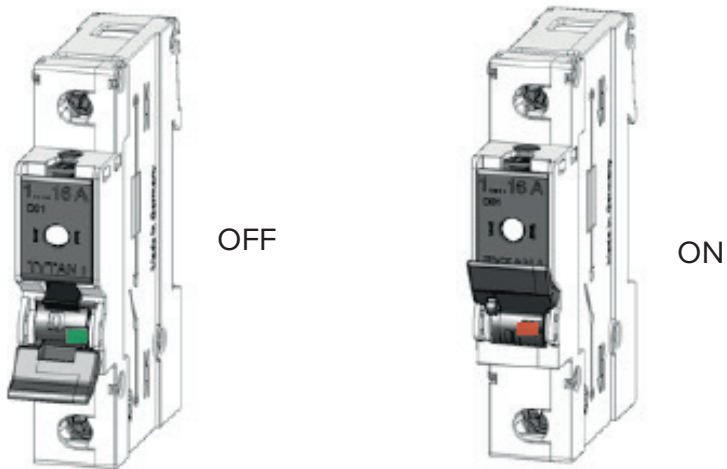
FAULT



FUSE-LINK blown



## ON / OFF Position



## Connect wires / Insert fuse-link

