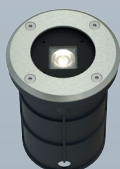
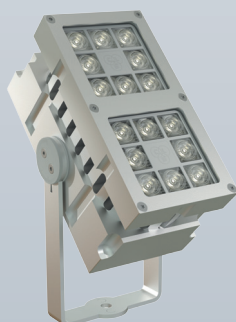
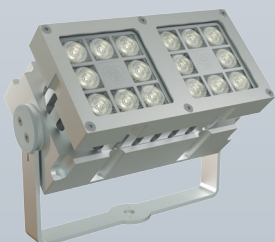
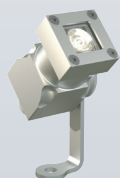


Unmatched Performance & Durability



REVO Outdoor IP67 Series

CLS REVO Outdoor IP67 Series

The REVO product series represents all core values that CLS stands for: Innovative design, high quality and optimum functionality in extreme compact dimensions.

The REVO has become the favourite of architects and lighting designers worldwide. They have applied the REVO series in numerous outdoor projects, varying from façade lighting of buildings and structures, up-lighting of trees and shrubs in gardens and parks, to the complete illumination of rollercoasters in theme parks. Worldwide more than 15.000!! projects have been equipped with the REVO series.

There are many reasons why the REVO product series has become so popular.

With this brochure, we sincerely hope to inspire you as well.

What makes the REVO series so unique?

Wide Choice Of Versions

Many different versions are available, yet all of them in the same form factor. This means design consistency in nearly every project. Over 2.200 different configurations are possible. The unique interactive Fixture Configurators on the CLS website will allow you to configure your own fixtures within 30 seconds. The possibilities for creating the perfect lighting design have therefore increased significantly.



Extreme Light Efficiency

Despite the compact dimensions of all the REVO variants, the effective light output is remarkably high. This is the result of using the latest generation of high power LEDs in combination with high-quality optics.

This enables the REVO to illuminate buildings up to 18 meters in height, with a power consumption of only 20 Watts. (REVO Basic) The XL and XXL versions with a power of 40 and 80 Watt are even capable of lighting up facades up to 40 meter.



Large Choice in Control Options

- > The CLS Magno system allows for the adjustment of intensity levels per fixture, without the use of any external control equipment. (not available on the Micro) By simply holding a small magnet against the fixture, a dimming value can be set and stored in the fixture's internal memory module in a matter of seconds.
- > Direct DMX versions have fully integrated power and DMX 512 control electronics. Cabling is easy due to our power/DMX combi core cables.



**DIRECT
DMX**

Resistant To Extreme Weather Conditions

REVO products are used worldwide in the most extreme climatic conditions. They can be found in the Middle East in countries such as Kuwait and Qatar, where outdoor summer temperatures can reach 60 °C and sandstorms can literally sandblast the fixture's housing, but also in Russia where winter temperatures drop to -30 °C.

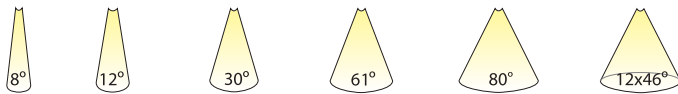
The REVO housing is CNC machined from a solid block of aluminium, after which it is anodized for optimum protection against moisture, salt and sand.

Sudden temperature differences, for instance caused by irrigation systems or simply the difference between night and day ambient temperatures, can result in condensation in LED fixtures. To prevent this, each REVO is fitted with a unique ventilation gland, which eliminates the very cause of condensation.

The Direct DMX versions are equipped with our patented Dynamic Temperature Control. The DTC system measures constantly the temperature inside the fixture. Should the temperature exceed a certain value, then the output power will be reduced in subtle way to a safe value.

Wide Choice of Beam Angles

The REVO offers as much as six different beam angle options, varying from an extremely narrow 8° beam for lighting columns, to a extra wide flood 80° for lighting larger surfaces from a short distance. Elliptical lenses (12 x 46°) are available as well. (The REVO Micro series contains divergent beam angles)

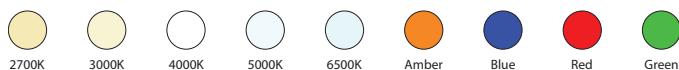


Wide Choice in Single Colours

The REVO offers a wide choice of available light colours. Standard configurations can be fitted with as much as 5 different colour temperatures and 4 different basic colours.

In addition, various combinations of different LED colours are available upon request. By combining amber and white for instance, very warm white colour temperatures (2300K) can be created.

Other specific combinations are subject to minimum order quantities; please contact your CLS dealer for more information.



Colour Changing Versions

The REVO Colour Flow versions are available in:

- > RGBW for creating subtle colours and pastel shades.
- > RGBA for creating deep saturated colours.
- > AWB for creating white shades between 1800K to 8000K and typical architectural colours as amber, blue & many mix colours.



Tunable White Versions

CLS offers not less than 3 different Tunable White versions:

- > 1800K-3000K
- > 1800K-4000K
- > 2700K-5000K



Unique Colour & Beam Control Options with the REVO DUO DMX Series

Lighting designers are offered now unique possibilities. The DUO DMX versions offer completely separated DMX control options per section. Both colours and beam angles can be mixed in almost any configuration, offering unmatched possibilities for designers to create the perfect light setting.





Westergasfabriek, The Netherlands



Musik Verein, Austria



Watertower, The Netherlands



Amstel Hotel, The Netherlands



Koppelpoort, The Netherlands

Accessories

Installation in parks and gardens is made easy by the availability of optional accessories. In addition, the extension bracket may prove to be useful for specific architectural applications. For optimal protection from any sort of annoying glare all REVO models can be equipped with a so-called 'snoot' available in different colours.



Optimal Integration With Its Surroundings

REVO fixtures are available in blank aluminium and black finish as standard.* Other colour finishes are available upon request and subject to minimum order quantities.



** Installation restrictions apply for black fixtures in ambient temperatures above 40 °C. Please contact your CLS dealer for more information.*

REVO Inground Versions

The Inground versions use the same LED modules and the same optical lens systems as the bracket versions. This ensures perfect matching of light colours and beam angles with the surface mounted versions.

The Inground versions of the REVO contains a double IP67 protection rating to prevent moisture inside the fixture. All inground fixtures are equipped with a so called Ventilation Gland, which minimalizes the risk of condensation within the fixture. The front plate is fitted with a Stainless steel 316 top ring.

The 20 Watt version of the REVO Inground series with 8 LED's is also available in a Direct DMX version with all electronics integrated inside the unit. This unit is available in single colours, colour changing and Tunable White configurations.



A Sound Investment

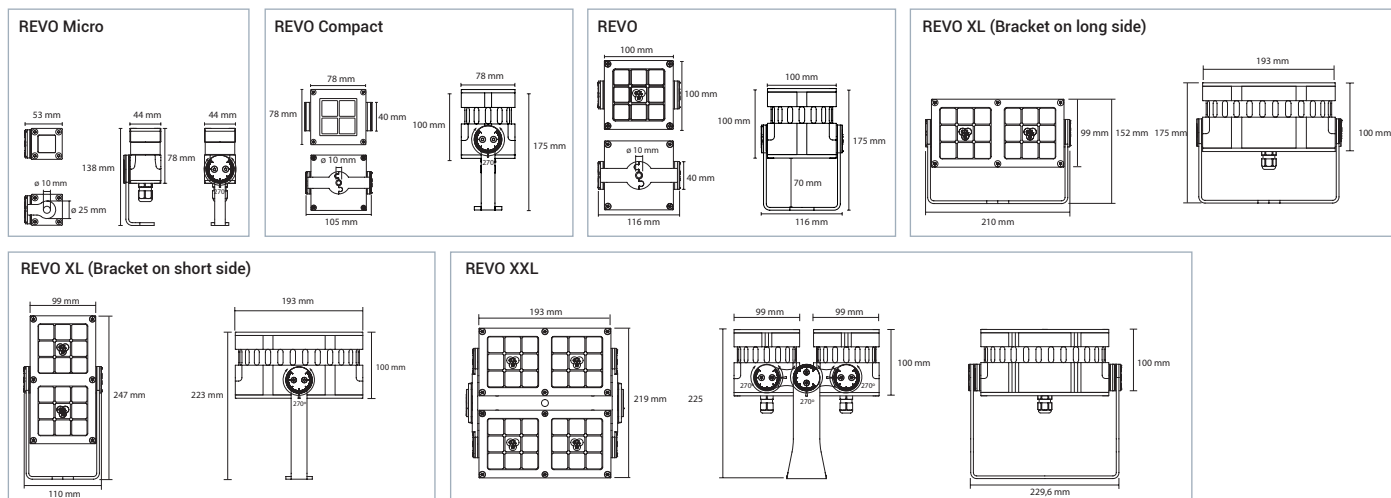
Components of the highest possible quality are used for the production of the REVO series, without compromise. Even if service is required after years of problem-free use, all individual parts can easily be replaced in a matter of minutes.

Unlike many other suppliers on the market who only claim to do so, **CLS actually designs and produces its fixtures in The Netherlands**. CLS belongs to a group of companies with more than 25 years of expertise in the professional lighting business. This provides additional reassurance for years to come.

Technical Specifications REVO series

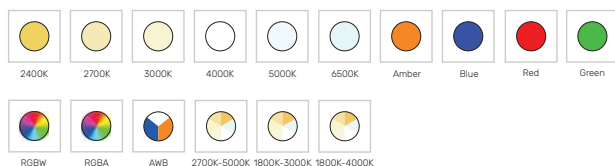
LED:	Luxeon / Cree	Power supply:	REVO Micro : 100-240 VAC / 24 V AC/DC
Available colours:	REVO Micro : 2700K, 3000K, 4000K & Amber		REVO C. : 180-264 VAC / 100-132 VAC
	REVO : 2400K, 2700K, 3000K, 4000K, 5000K, 6500K, amber, red, blue & green		REVO : 100-240 VAC
Colour changing:	REVO: : RGBA, RGBW & AWB		REVO XL : 100-240 VAC
Tunable White:	REVO: : 2700K-5000K, 1800K-3000K & 1800K-4000K	Housing:	Anodised aluminium
		IP value:	IP67
Lenses:	REVO Micro : 20°, 30°, 66° & 20 x 42°	Cable length:	200 cm
	REVO : 8°, 12°, 30°, 61°, 80° & 12x46°	Ambient temperature:	-20 °C to +50 °C
Swivel:	360° horizontal, 270° vertical		

Measurements REVO series



Icons

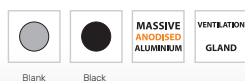
Colour & colour temperatures



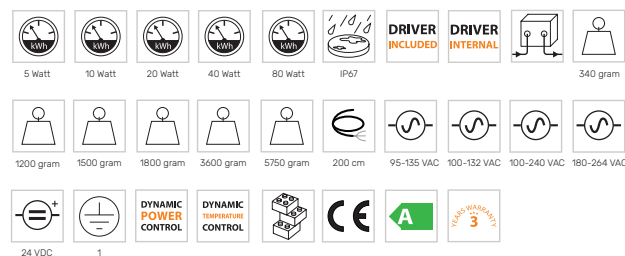
Optics



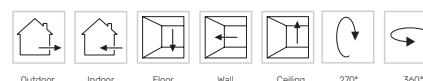
Housing & finish



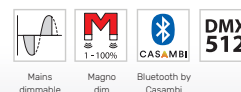
General specifications



Mounting options



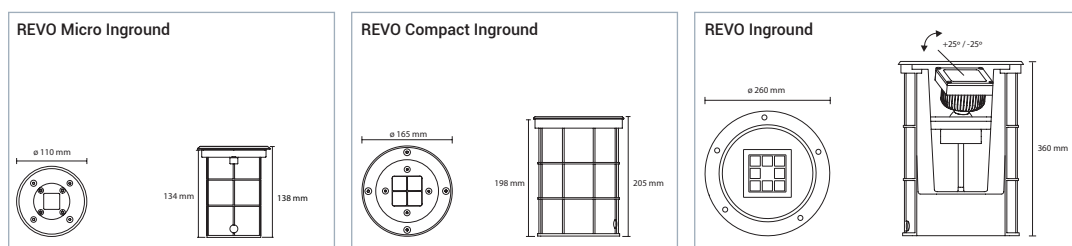
Control options



Technical Specifications REVO Inground series

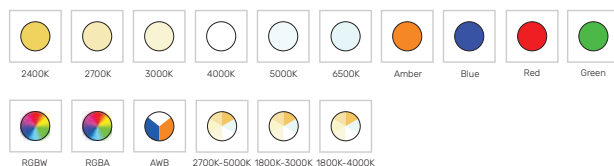
LED:	Luxeon / Cree
Available colours:	Micro Inground : 2700K, 3000K, 4000K & Amber Other versions : 2400K, 2700K, 3000K, 4000K, 5000K, 6500K, amber, red, blue & green
Power supply:	Micro Ingr. : 100-240 VAC / 24V AC/DC C. Inground : 180-264 VAC / 100-132 VAC Inground : 200-277 VAC / 95-135 VAC DMX : 200-277 VAC
Swivel:	Inground : 360° horizontal, 50° vertical Other versions : 360° horizontal
Lenses:	Micro Inground : 20°, 30°, 66°, 20 x 42° & 120° (soft) Other versions : 8°, 12°, 30, 61°, 80° & 12 x 46°
Housing:	Stainless steel 316 top ring / Coated aluminium / Plastic sleeve
IP value:	IP67
Cable length:	200 cm
Ambient temperature:	-20 °C to +50 °C

Measurements REVO Inground series

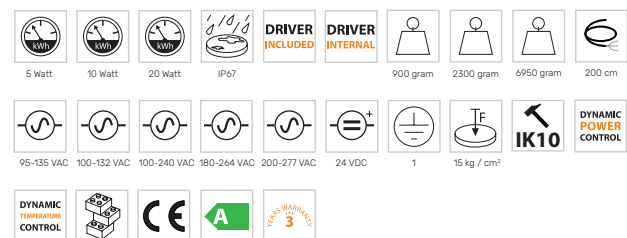


Icons

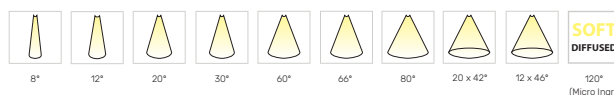
Colour & colour temperatures



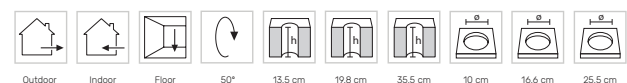
General specifications



Optics



Mounting options



Housing & finish



Control options

