

1950 SceneTouch Panel ProDVX

The 1950 SceneTouch Panel ProDVX is a 7" capacitive touch, full-colour, high-resolution lighting control panel designed to work with Helvar's Imagine system over Ethernet.

An easy-to-use, gesture-controllable and intuitive interface that is customisable to different applications via the SceneStudio online design tool.

The product can be installed flush or surface mount on a wall by selecting the appropriate backbox / bracket accessory.



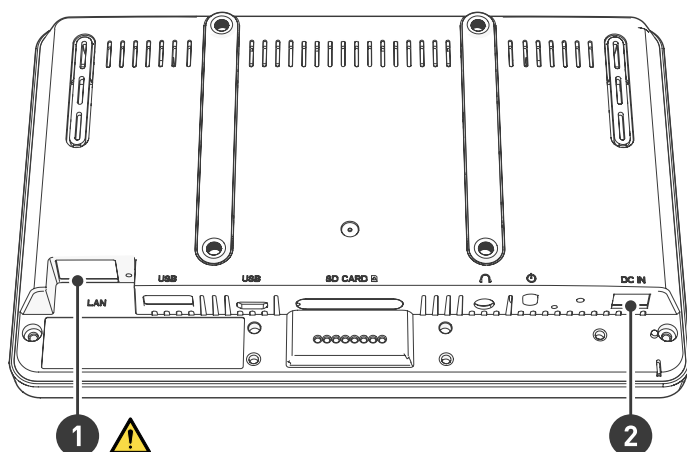
Key Features

- Capacitive touch lighting control panel
- 7" high-resolution colour touch screen
- Gesture controllable
- Ethernet LAN port
- DC or PoE power input (DC PSU sold separately)
- Suitable for solid and plasterboard walls
- Available in black or white

Software Compatibility

- Designer 5.4 or later
- Workgroup size up to 30 Imagine Application Controllers
- Multicast workgroups are NOT supported

Connections



1. Ethernet to Imagine Application Controller



Note: RJ45 90 degree right angle or Slim plug required, due to limited space.

2. 12 V DC-IN

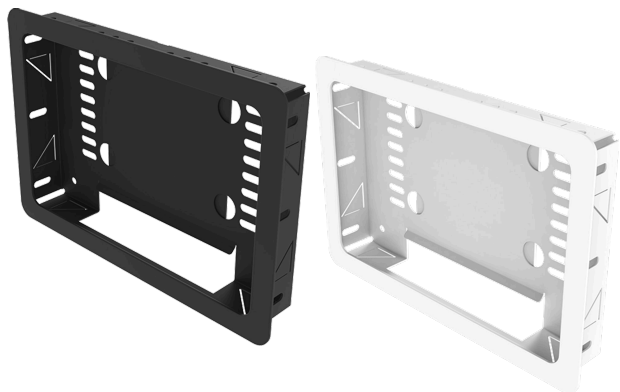
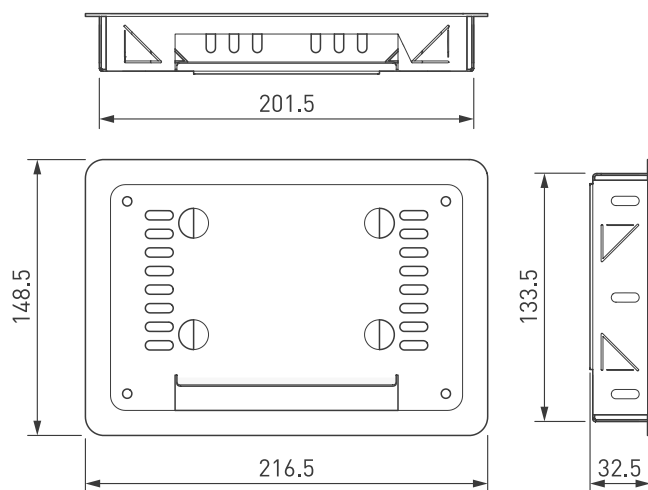
Note: PSU not included (sold separately)

Dimensions (mm)

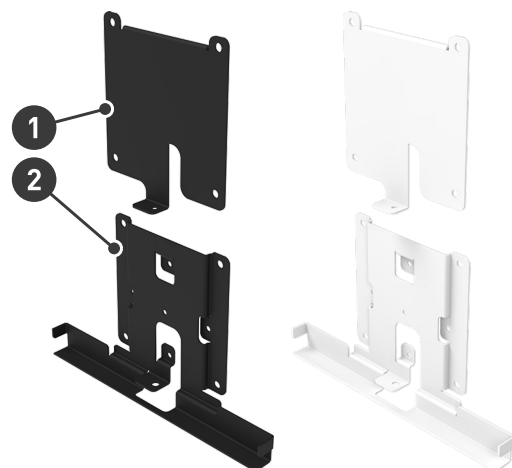
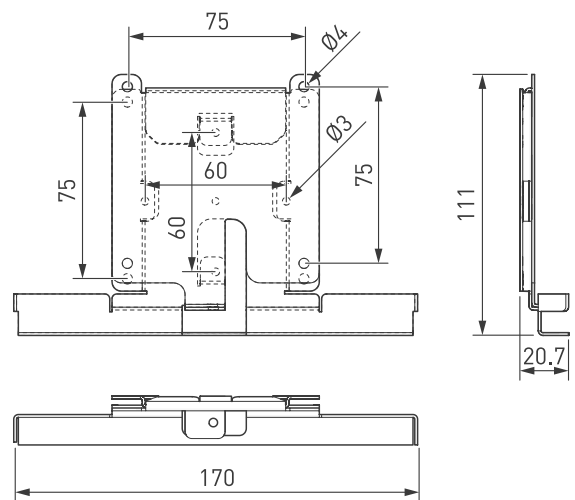


Mounting Accessory Options

Flush Mount 7 ProDVX White / Black



Surface Mount 7 ProDVX White / Black



1. Display bracket
2. Wall bracket

Technical Data

Display

Screen:	7" TFT LCD @ 60 Hz
Resolution:	1024 × 600
Backlight:	Edge-LED backlight
Brightness:	300 cd/m ²
Contrast:	800 to 1
Response time:	13 ms
Viewing angle:	H140 ° / V130 °
Treatment:	Non-glare
Haze:	2–8 %
Side LED's:	Not in use

Electrical data

Power supply:	12 VDC / 2 A or PoE (Power over Ethernet)
	Note: PoE should be isolated from Application Controller Network.
Typical power consumption:	8 W

Order codes

1950000	SceneTouch7 Panel ProDVX White
1950001	SceneTouch7 Panel ProDVX Black

Accessories (sold separately):

5008000	Surface Mount 7 ProDVX White
5008001	Surface Mount 7 ProDVX Black
5007000	Flush Mount 7 ProDVX White
5007001	Flush Mount 7 ProDVX Black
5010000	Plug-in Adapter ProDVX (12 V, Barrel), UK and EU plugs included

Connections

LAN:	1 x RJ45 10/100/1000 Mb/s, (Cat 5E up to 100 m. To the Imagine Application Controller network.)
------	---

Wireless connectivity

2.4 GHz (Wi-Fi)	
Frequency range:	2.400–2.4835 GHz
Max. transmission power:	17 dBm
5 GHz (Wi-Fi)	
Frequency range:	5.15–5.35GHz and 5.47–5.85GHz
Max. transmission power:	17 dBm
Bluetooth®:	Bluetooth 5.2
Frequency range:	2.402–2.480 GHz
Max. transmission power:	6 dBm
Wi-Fi:	802.11 a/b/g/n/ac

Operating and storage conditions

Ambient temperature:	0 °C to +40 °C
Relative humidity:	Max. 95 %, noncondensing
Storage temperature:	-10 °C to +55 °C


Mechanical data

Dimensions:	188.1 × 120.3 × 25.2 mm
Mounting:	VESA 75
Material (housing):	ABS+PC
Colour:	Black or white
Weight:	360 g
IP rating:	IP20

Compatibility

Device:	All Imagine Application Controllers
Designer:	5.4 or later

Conformity and standards

Conformity:	  
RED:	EN 300 328, EN 301 489-1, EN 301 489-17, EN 18031-1
Safety:	EN 62368-1
Environment:	Complies with REACH and RoHS directives.