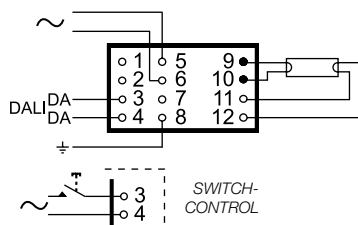


Connection diagrams

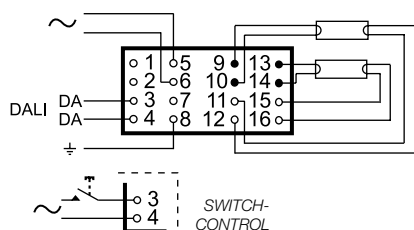
EL-iDim

NOTE: All wiring to the connectors marked with a red dot (hot wires) should be as short as possible.

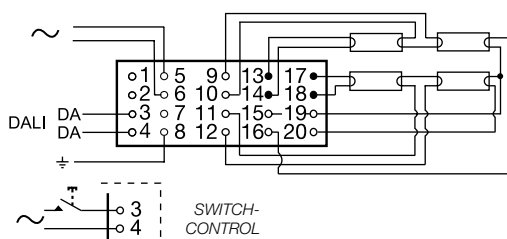
1



2



3



3

- | | |
|---|--------------|
| 1 | EL1x ...iDim |
| 2 | EL2x ...iDim |
| 3 | EL4x ...iDim |

Characteristics

	EL-iDim
Max.temperature at t _c point	75°C
Ambient temperature range	+10...+50°C ¹⁾
Storage temperature range	-40...+80°C
Maximum relative humidity	no condensation
Number of starts per lamp	> 50 000
AC Range	198-264 VAC
DC range (starting voltage >198VDC)	176-280 VDC
Over voltage duration	320 VAC, 1h
Power factor (at maximum), typical	0.96
Earth leakage current	< 0.4 mA
Maximum working voltage (U _{out})	400 V
Lifetime (90% survival)	50 000 h, at t _c
Max length of ballast to lamp wiring	1.5 m / 2 m (hot / cold) ²⁾
Ignition time, typical	1.0 s
Type of starting	Preheat (warm start)

1) To ensure stable operation of TC-L lamps in ambient temperatures below 18°C it is not recommended to dim the light level below 3%

2) For TC-L lamps 1 m / 2 m (hot/cold lamp wires)

Standards

	EL-iDim
General and safety requirements EN61347-2-3	●
Additional safety requirements for AC/DC supplied ballasts acc. to EN61347-2-3 Annex J	●
Performance requirements EN60929	●
Lamp life acc. to EN60081 / EN60901 ^{*)}	●
Mains current harmonics, acc. to EN61000-3-2	●
Radio Frequency Interference, acc. to EN55015	●
Immunity standard, acc.to EN61547	●
Vibration test EN60068-2-64 test Fh	●
Bump test EN60068-2-29 test Eb	●
Thermal protection class EN61347, C5e	●

* EN 60081 for T5 & T8 fluorescent lamps, EN 60901 for compact fluorescent lamps

