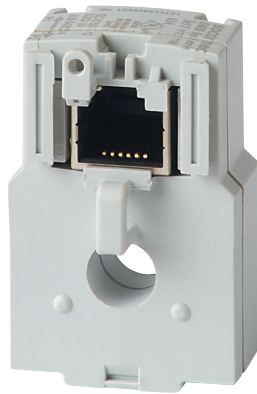


48290500

Solid current sensor TE-18 18mm 5-20A



Strong points

- Plug & Play
- Accuracy as per standard IEC 61557-12
- Installation

General characteristics

- Range from 5 to 2000A.
- used with DIRIS Digiware, DIRIS A-40 and DIRIS B.

Compliance with standards

- IEC 61557-12
- ISO 14025
- UL

Access to resources (ex: manuals)

TE smart current sensors measure the load currents of an electrical system and send the data to meters and measurement hubs via an RJ12 plug-and-play output. Thanks to a wide measurement range, TE current sensors cover the full current range of 5 to 2000 A, with 7 references. TE solid current sensors can be connected to DIRIS Digiware, DIRIS A-40 and DIRIS B via a rapid RJ12 connection. Numerous accessories are available to aid the installation of sensors in any type of cabinet.

Technical Characteristics

Model	TE
Opening	Diam.8,6
Rated current [A]	20
Secondary rated current	RJ12
Function	Current measurement
Type of current	AC
Type of product	Solid core
Internal diameter	9
Secondary Output	Voltage
Accuracy class	0.5
Type of connection	RJ12
Conformity to standards	IEC 61557-12 UL 61010
Customisable	No

Classification

UNSPSC	83101808
ETIM Class	EC002048
IGCC	6042

Commerce

Effective date	2013-11-22
Offer Life Cycle Code	40
Country of origin	FR

ETIM - Electrical characteristics

Rated primary current [A]	20
Rated secondary current [A]	0.1
Rated secondary apparent power [VA]	0.1
Accuracy class	0.2S
Overcurrent limiting factor	FS 10
Calibrated	Yes

ETIM - Mechanical characteristics

With contact protection	Yes
Height opening [mm]	8.6..8.6
Width opening [mm]	8.6..8.6
Opening diameter [mm]	8.6
Snap mounting	Yes
With copper rail	Yes
Secondary connection	Plug-in connection

ETIM - Technical features

Model	Through-feed current converter
Number of primary inputs	1

Logistics

GTIN/EAN	3596032776466
Customs number	8504312990
Price unit	PC
Weight of the packing unit [kg]	0.03
Length of the packing unit [m]	0.02
Width of the packing unit [m]	0.11
Depth of the packing unit [m]	0.13

Norms

Conformity to standards	IEC UL
-------------------------	------------